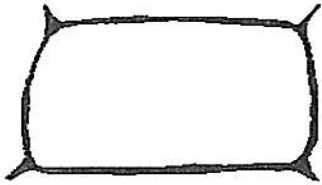
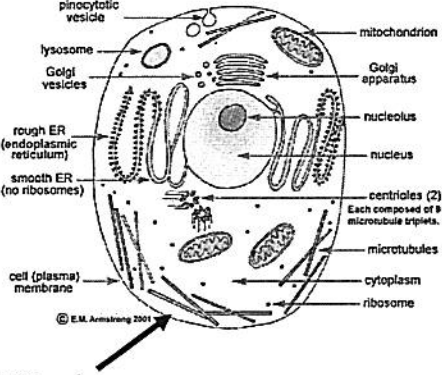
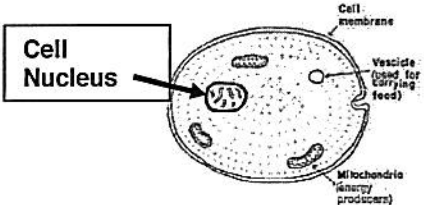
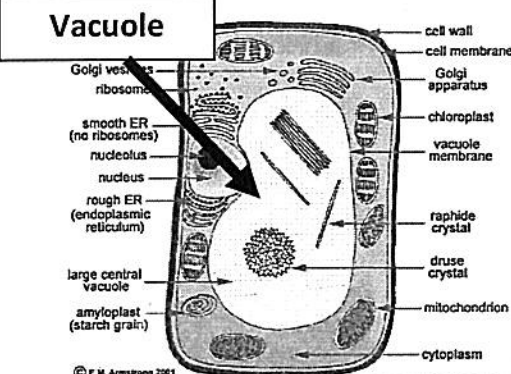
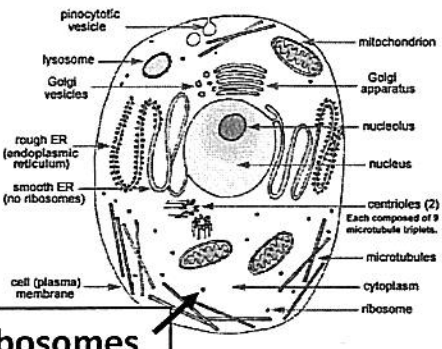
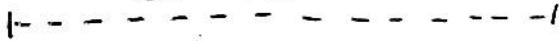


cut here

## Cell Organelles – Foldable Study Guide

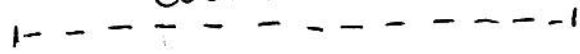
<p><b>Cell Wall</b></p>		
<p><b>Cell membrane</b></p>	 <p><b>Cell Membrane</b></p>	
<p><b>Nucleus</b></p>	 <p><b>Cell Nucleus</b></p> <p>Fig. 6. The main parts of a simple animal cell</p>	
<p><b>Vacuole</b></p>	 <p><b>Vacuole</b></p>	
<p><b>ribosomes</b></p>	 <p><b>ribosomes</b></p>	

Cut here



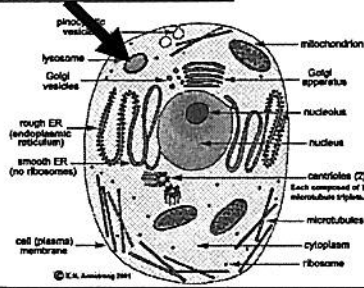
<p><b>Mitochondria</b></p>	<p><b>Mitochondria</b></p> <p>© E.M. Armstrong 2001</p>	
<p><b>Golgi Apparatus</b></p>	<p><b>Golgi Apparatus</b></p> <p>© E.M. Armstrong 2001</p>	
<p><b>Smooth Endoplasmic Reticulum</b></p>	<p><b>SMOOTH Endoplasmic Reticulum</b></p> <p>© E.M. Armstrong 2001</p>	
<p><b>Rough Endoplasmic Reticulum</b></p>	<p><b>ROUGH Endoplasmic Reticulum</b></p> <p>© E.M. Armstrong 2001</p>	

cut here



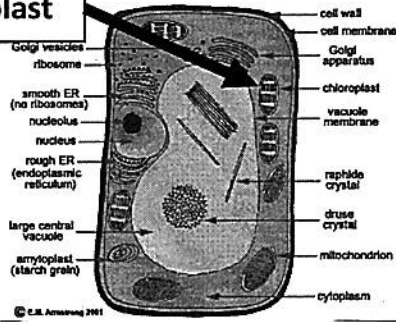
Lysosome

Lysosome



Chloroplast

Chloroplast



Cytoplasm

